

One important note:

1. If there is any accounting between the size size and the actual size, the actual size shall- shthead. The Company modified The right to computers The file above products without priorDrawings, and the Company will not be impressed for using drawings or drawings.
2. due to the printing relationship, the color of the product and picture color is overdueDifferent, and the actual product product shall be refined.



Pano.v



Bathroom accessory set

- Nama perusahaan : PT. The Great Ultimate Indonesia
- alamat:Pergudangan 99, Blok T1A. Kab. Tangerang. Kosambi Banten. Indonesia
- Tel: +62 857-1666-0100



Pano.v



Bathroom accessory set

Space aluminum/stainless steel

Material alumunium ruang:
Multifungsi: desain mode ini sangat cocok untuk kamar mandi, dapur, ruang tamu, jalan masuk, dan kantor.



Life personal status ● ● ○

Called as artwork, each part shows elegant living taste and shows unigue design.



Pano.V

Shower head set



Material alumunium ruang:

Badan aluminium luar angkasa:Senjata utama aluminium luar angkasa, shower stainless steel ... ABS sprints, disain led light ... tampilan digital, keystroke switch keluar

LED ambient light:

Using hydroelectric power generation technology, it can display the water temperature in real time,. Innovative ambient lighting makes the bathroom full of life.

Real-time Water Temperature Display:

The principle of hydroelectric power generation does not require electricity or batteries. The LED display is powered by water flow. The display is waterproof. Just turn on the water outlet switch and the water temperature will immediately light up (color will change with the temperature)

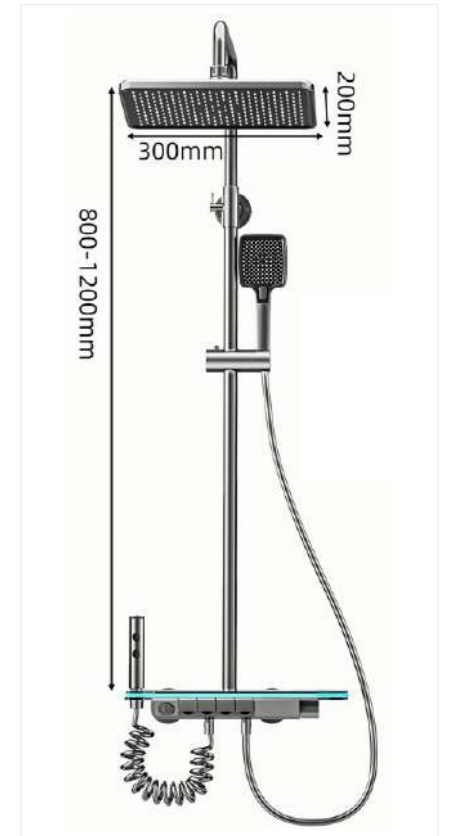
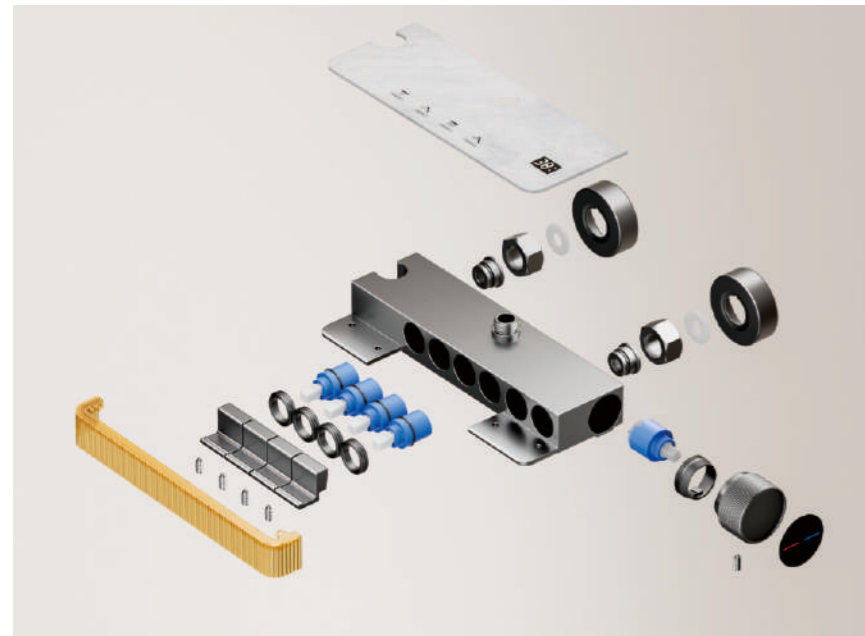
4 Water Outlets:

Piano keys are independently controlled, top spray/hand-held/bidet spout/tub faucet, each water outlet has a corresponding switch, the key functions are clearly marked (4 water outlets cannot work at the same time) The large and flat main panel design can place various toiletries, saving your space.



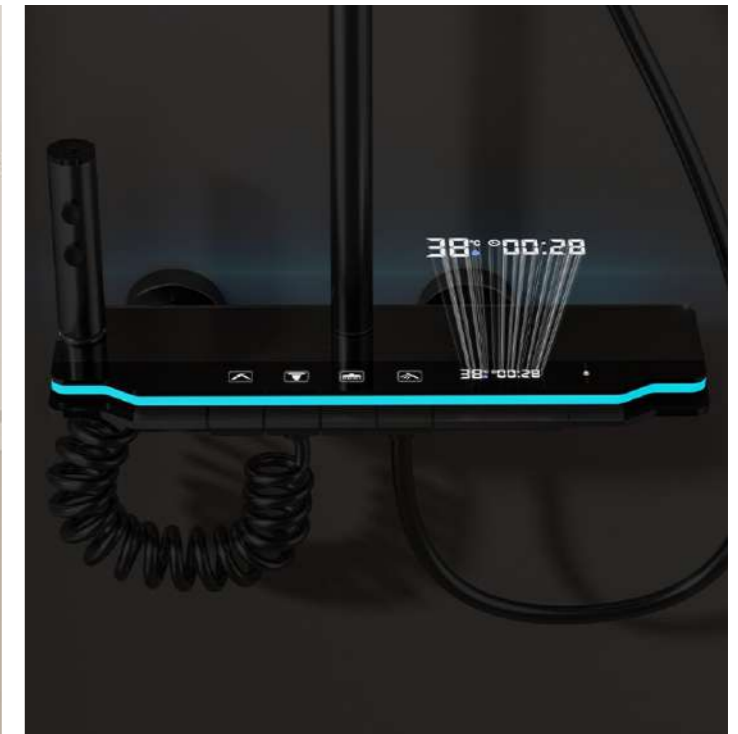
NO.2000-1

ama: setelan mandi sprinkles
Warna: abuSubjek: aluminium
Product color: Grey
Fungsi produk: LED luminescent,
tampilan digital,
empat fungsi dari air



NO.2002-1

ama: setelan mandi sprinkles
Warna: abuSubjek: aluminium
Product color: Grey
Fungsi produk: LED luminescent,
tampilan digital,
empat fungsi dari air



Life personal status ●●○

Called as artwork, each part shows elegant living taste and shows unigue design.

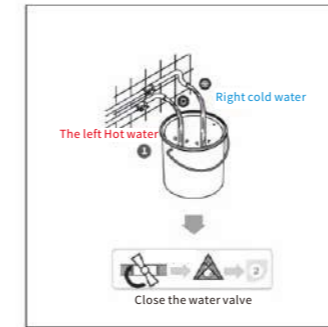


Pano.V

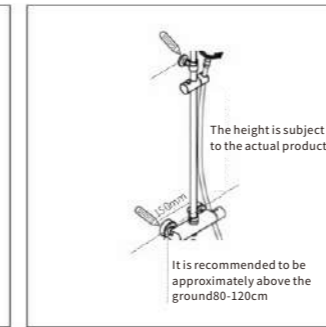
Shower head set



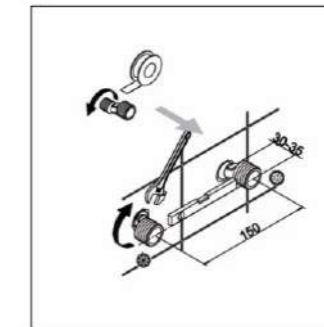
Product installation



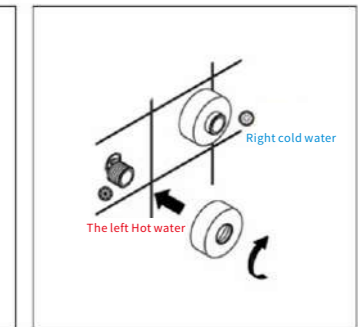
1. Remove impurities from the decoration process, thoroughly flush the pipes, close the water valve, and after confirming that there is no leakage at the pipe openings, proceed to the next step.



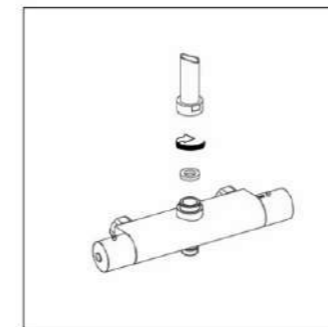
2. Attach the showerhead rod to the faucet, measure and fix the installation position according to the actual size, mark it, and then drill holes in the wall.



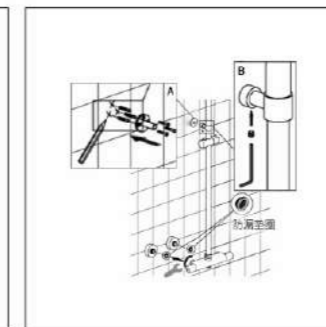
3. Wrap the curved corners with biological tape and tighten them at the drilled holes with a wrench. The distance between the curved corners should be 150mm. It is recommended that the installation height be about 80-120cm from the ground.
 ① The length of the curved corners exposed above the wall should be consistent and kept perpendicular to the wall; otherwise, there is a possibility of leakage.
 ② The connection of the cold and hot water inlet pipes must be correct; otherwise, the faucet cannot be used normally.



4. Install the curved corner decorative cover and screw it until it adheres to the wall.



5. Insert the leak-proof gasket and connect the exposed rod to the bottom of the faucet



6. Insert the leak-proof gasket into the faucet nut, connect the main body to the curved corner with A wrench, insert the expansion rubber granule at the hole drilled at point A, put on the fixed seat and tighten the screw, then tighten the exposed rod and the fixed seat at point B with a hexagonal screwdriver.



7. Insert the top spray into the leak-proof ring, tighten it with the L-rod, connect the hose to the lower end of the handheld flower wine and the faucet base, and the installation is complete.

1. The height of the showerhead from the ground:

Consumers should fully consider the size of the bathroom space when making a purchase. The height of a showerhead is generally between 90 and 100 centimeters. Within this range, adult family members can be determined based on requirements or the average height. It is generally not advisable to exceed 110cm; otherwise, it may not be suitable to lift the showerhead with a hanging rod. It should not be less than 80cm either; otherwise, you may need to bend over every time you open the valve

2. The distance between the two hot and cold water outlets:

The standard reserved distance between the hot and cold water outlets is 15cm. Remember to measure them all centering. If it is too wide or too narrow, it needs to be adjusted by the curved Angle, but the adjustment range is very limited, normally within ± 2 cm. The heights of the cold and hot water must be made the same. Use a level to measure whether the faucet is installed horizontally

3. Before and after installation, drain and clean:

Before installation, it is best to drain the water in the pipeline and rinse it clean. Because the newly renovated pipes contain a lot Even a considerable amount of fine sand may contain impurities if it is installed and directly used for pouring water Go directly into the interior of the showerhead. Some of them are difficult to clean and will affect the water output of the showerhead.

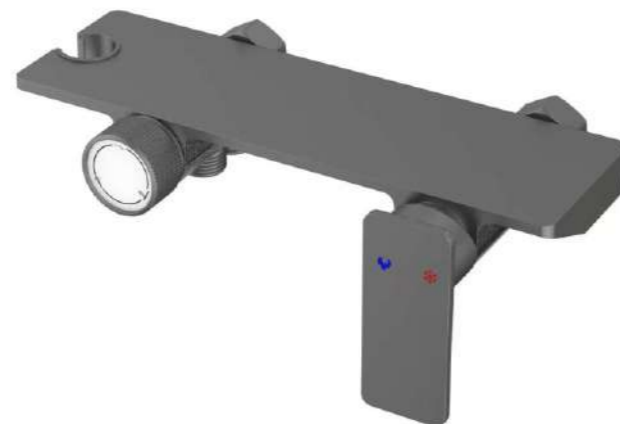
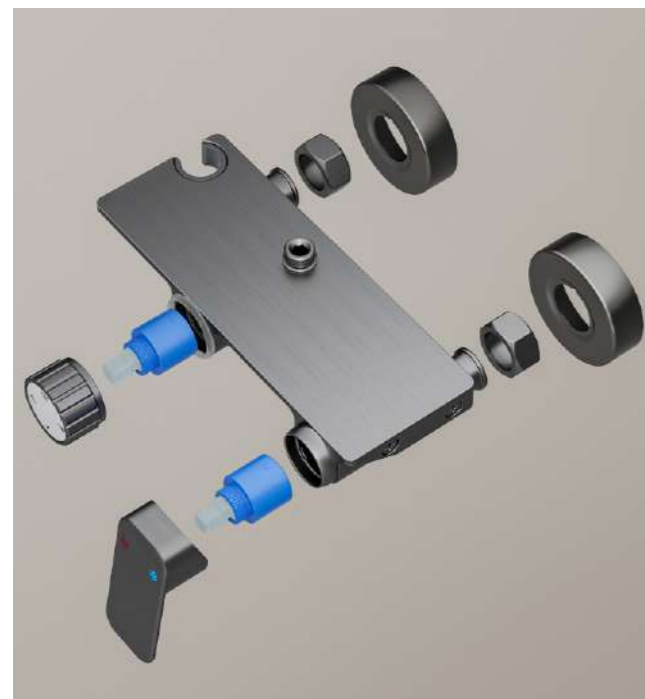
4. Do not install the cold and hot water supply pipes in reverse:

Do not install the cold and hot water supply pipes in reverse. Generally, the hot water supply pipe is on the left side facing the faucet, and the cold water supply pipe is on the right side.

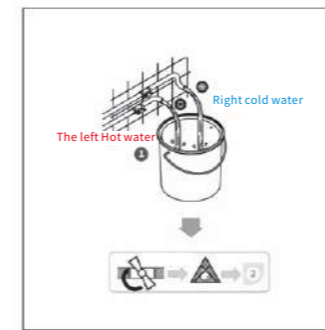


NO.2100-1

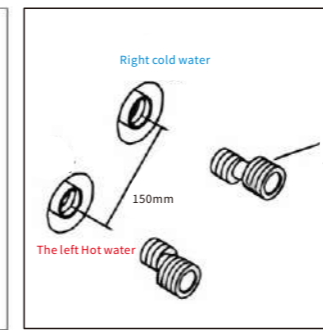
ama: setelan mandi sprinkles
 Warna: abuSubjek: aluminium
 Product color: Grey
 Fungsi produk :3 mengeluarkan air bersih



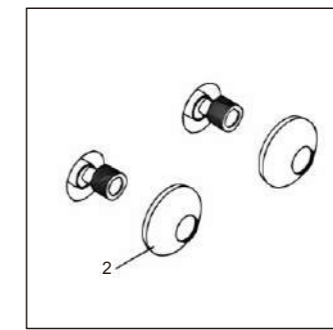
Product installation



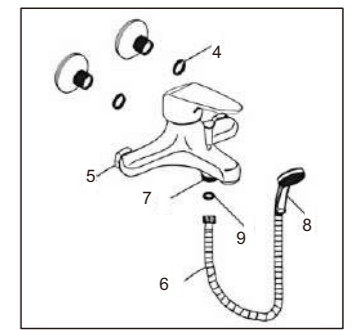
1. Remove impurities from the decoration process, thoroughly flush the pipes, close the water valve, and after confirming that there is no leakage at the pipe openings, proceed to the next step.



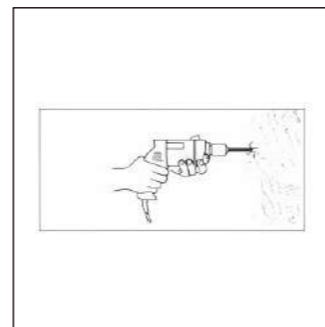
2. Wrap sealing tape around the two joints (1) and adjust the two joints to make the center distance between them 150mm and keep them at the same level



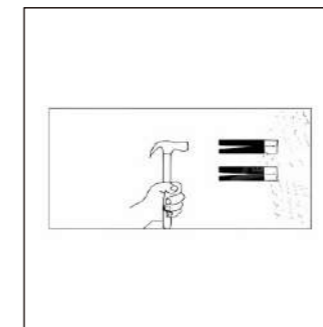
3. Install the curved corner decorative cover and screw it until it adheres to the wall.



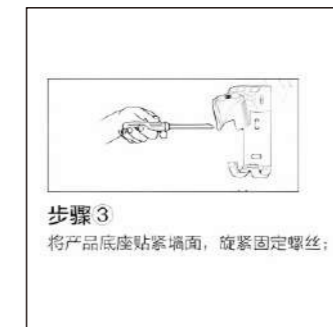
4. Insert the sealing gasket (4) into the nut (5), screw it onto the joint and tighten it. Install gaskets (9) into both ends of the shower hose (8). Then connect one end of the shower hose to the water outlet of the faucet (7) and the other end to the showerhead (8).



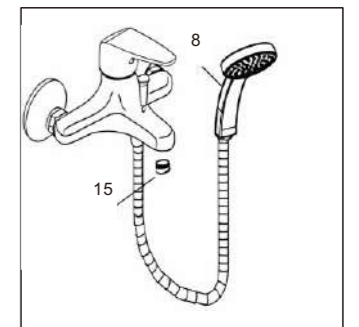
5. Drill installation holes on the marked wall surface



6. Tap the plastic expansion pipe into the drilled installation hole:



步骤3
 将产品底座贴紧墙面，旋紧固定螺丝；



8. connect the hose to the lower end of the handheld flower wine and the faucet base, and the installation is complete.

1. The distance between the two hot and cold water outlets:

The standard reserved distance between the hot and cold water outlets is 15cm. Remember to measure them all centering. If it is too wide or too narrow, it needs to be adjusted by the curved Angle, but the adjustment range is very limited, normally within ± 2cm. The heights of the cold and hot water must be made the same. Use a level to measure whether the faucet is installed horizontally

2. Before and after installation, drain and clean:

Before installation, it is best to drain the water in the pipeline and rinse it clean. Because the newly renovated pipes contain a lotEven a considerable amount of fine sand may contain impurities if it is installed and directly used for pouring waterGo directly into the interior of the showerhead. Some of them are difficult to clean and will affect the water output of the showerhead.

3. Do not install the cold and hot water supply pipes in reverse:

Do not install the cold and hot water supply pipes in reverse. Generally, the hot water supply pipe is on the left side facing the faucet, and the cold water supply pipe is on the right side.



Aluminium luar angkasa

And taste for the art of living
 You will come to the forefront of the fashion
 The enjoyment of heaven
 and earth to give the Aura
 And Tian Ran between aftertaste
 A new realm of high quality of life



Material aluminium ruang:

6063# material aluminium luar angkasa, tidak berkarat,

Multifungsi:

desain mode ini sangat cocok untuk kamar mandi, dapur, ruang tamu, jalan masuk, dan kantor.

Mudah dipasang:

perangkat keras yang kita miliki. (pemasangan sekrup) pemasangan sekrup dan (jangan melubangi) lem agar produk tetap menarik secara estetika.

Adaptif:

batang kait ini dapat dipasang pada kebanyakan permukaan, masing-masing dapat menopang hingga berat 15 kg dan memenuhi kebutuhan suspensi anda

Pilihan warna:

pilihlah dari berbagai warna, termasuk hitam, putih, dan abu-abu, untuk melengkapi perangkat keras rumah anda yang sudah ada.



NO.1-1

Nama: Hook
 Warna: Black
 Material produk: aluminium
 Aksesori produk: sekrup + lem
 Net berat :59.2 g
 Berat kotor :84.8 g
 Ukuran kotak dalam:22*5.5*6cm



NO.1-2

Nama: Hook
 Warna: Black
 Material produk: aluminium
 Aksesori produk: sekrup + lem
 Net berat :81.6g
 Berat kotor :115g
 Ukuran kotak dalam:32*5.5*6.5cm



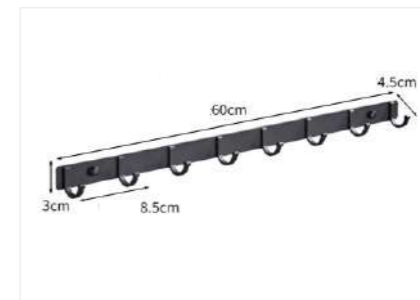
NO.1-3

Nama: Hook
 Warna: Black
 Material produk: aluminium
 Aksesori produk: sekrup + lem
 Net berat :92.2g
 Berat kotor :134.9g
 Ukuran kotak dalam:42*5.5*6.5cm



NO.1-4

Nama: Hook
 Warna: Black
 Material produk: aluminium
 Aksesori produk: sekrup + lem
 Net berat :113.9g
 Berat kotor :164.8g
 Ukuran kotak dalam::52*5.5*6.5cm



NO.1-5

Nama: Hook
 Warna: Black
 Material produk: aluminium
 Aksesori produk: sekrup + lem
 Net berat :153.4g
 Berat kotor :220.4g
 Ukuran kotak dalam:70.5*32.5*57cm

Packaging + Accessories



Sekrup pemasangan



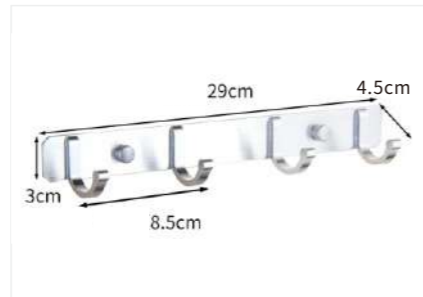
Glue installation





NO.1-6

Nama: Hook
 Warna: Silver
 Material produk: aluminium
 Aksesoris produk: sekrup + lem
 Net berat :59.2 g
 Berat kotor :84.8 g
 Ukuran kotak dalam:22*5.5*6cm



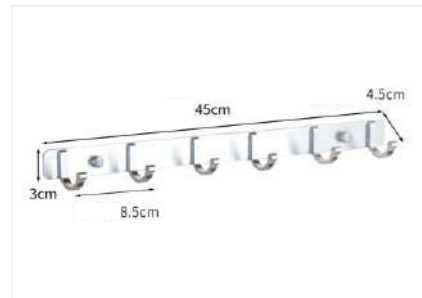
NO.1-7

Nama: Hook
 Warna: Silver
 Material produk: aluminium
 Aksesoris produk: sekrup + lem
 Net berat :81.6g
 Berat kotor :115g
 Ukuran kotak dalam:32*5.5*6.5cm



NO.1-8

Nama: Hook
 Warna: Silver
 Material produk: aluminium
 Aksesoris produk: sekrup + lem
 Net berat :92.2g
 Berat kotor :134.9g
 Ukuran kotak dalam:42*5.5*6.5cm



NO.1-9

Nama: Hook
 Warna: Silver
 Material produk: aluminium
 Aksesoris produk: sekrup + lem
 Net berat :113.9g
 Berat kotor :164.8g
 Ukuran kotak dalam::52*5.5*6.5cm

Packaging + Accessories



NO.1-21

Nama: Hook
 Warna: Grey
 Material produk: aluminium
 Aksesoris produk: sekrup + lem
 Net berat :59.2 g
 Berat kotor :84.8 g
 Ukuran kotak dalam:22*5.5*6cm



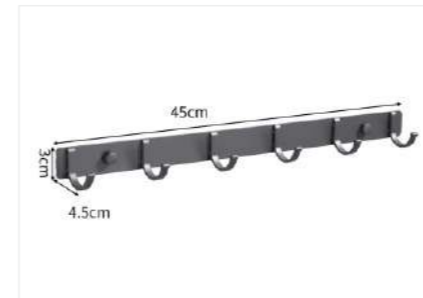
NO.1-22

Nama: Hook
 Warna: Grey
 Material produk: aluminium
 Aksesoris produk: sekrup + lem
 Net berat :81.6g
 Berat kotor :115g
 Ukuran kotak dalam:32*5.5*6.5cm



NO.1-23

Nama: Hook
 Warna: Grey
 Material produk: aluminium
 Aksesoris produk: sekrup + lem
 Net berat :92.2g
 Berat kotor :134.9g
 Ukuran kotak dalam:42*5.5*6.5cm



NO.1-24

Nama: Hook
 Warna: Grey
 Material produk: aluminium
 Aksesoris produk: sekrup + lem
 Net berat :113.9g
 Berat kotor :164.8g
 Ukuran kotak dalam::52*5.5*6.5cm

Packaging + Accessories

Sekrup pemasangan

Glue installation

1. Ditandai dengan baik di posisi instalasi
2. Dengan 6mm Sedikit meninju
3. Screw in the expansion screw for delivery
4. Kencangkan sekrup
5. Cover it with the decorative hat
6. Instalasi selesai

1. Lap bersih posisi instalasi anda dengan handuk
2. Ditandai dengan baik di lokasi instalasi
3. Gunakan lem bebas di bagian belakang pelat
4. Tekan ke dinding Pasang stiker tambahan
5. Tunggu 72 jam untuk membuka stiker cadangan
6. Instalasi selesai

Sekrup pemasangan

Glue installation

1. Ditandai dengan baik di posisi instalasi
2. Dengan 6mm Sedikit meninju
3. Screw in the expansion screw for delivery
4. Kencangkan sekrup
5. Cover it with the decorative hat
6. Instalasi selesai

1. Lap bersih posisi instalasi anda dengan handuk
2. Ditandai dengan baik di lokasi instalasi
3. Gunakan lem bebas di bagian belakang pelat
4. Tekan ke dinding Pasang stiker tambahan
5. Tunggu 72 jam untuk membuka stiker cadangan
6. Instalasi selesai



Material aluminium ruang:

6063# material aluminium luar angkasa, tidak berkarat,

Multifungsi:

desain mode ini sangat cocok untuk kamar mandi, dapur, ruang tamu, jalan masuk, dan kantor.

Mudah dipasang:

perangkat keras yang kita miliki. (pemasangan sekrup) pemasangan sekrup dan (jangan melubangi) lem agar produk tetap menarik secara estetika.

Adaptif:

batang kait ini dapat dipasang pada kebanyakan permukaan, masing-masing dapat menopang hingga berat 15 kg dan memenuhi kebutuhan suspensi anda

Pilihan warna:

pilihlah dari berbagai warna, termasuk hitam, putih, dan abu-abu, untuk melengkapi perangkat keras rumah anda yang sudah ada.



NO.1-11

Nama: Hook
Warna: Black
Material produk: aluminium
Aksesoris produk: sekrup + lem
Net berat :83.8 g
Berat kotor :133 g
Ukuran kotak dalam:31*5.5*6.5cm



NO.1-12

Nama: Hook
Warna: Black
Material produk: aluminium
Aksesoris produk: sekrup + lem
Net berat :115.5 g
Berat kotor :176 g
Ukuran kotak dalam:38*5.5*6.5cm



NO.1-13

Nama: Hook
Warna: Black
Material produk: aluminium
Aksesoris produk: sekrup + lem
Net berat :144.8 g
Berat kotor :216 g
Ukuran kotak dalam:46*5.5*6.5cm



NO.1-14

Nama: Hook
Warna: Black
Material produk: aluminium
Aksesoris produk: sekrup + lem
Net berat :175.7 g
Berat kotor :257 g
Ukuran kotak dalam:56*5.5*6.5cm



NO.1-15

Nama: Hook
Warna: Black
Material produk: aluminium
Aksesoris produk: sekrup + lem
Net berat :250 g
Berat kotor :345.8 g
Ukuran kotak dalam:76*5.5*6.5cm

Packaging + Accessories



Sekrup pemasangan



1. Ditandai dengan baik di posisi instalasi
2. Dengan 6mm Sedikit meninju
3. Screw in the expansion screw for delivery



4. Kencangkan sekrup
5. Cover it with the decorative hat
6. Instalasi selesai

Glue installation



1. Lap bersih posisi instalasi anda dengan handuk
2. Ditandai dengan baik di lokasi instalasi
3. Gunakan lem bebas di bagian belakang pelat



4. Tekan ke dinding Pasang stiker tambahan
5. Tunggu 72 jam untuk membuka stiker cadangan
6. Instalasi selesai



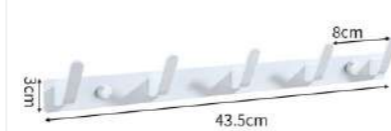
NO.1-16

Nama: Hook
 Warna: White
 Material produk: aluminium
 Aksesoris produk: sekrup + lem
 Net berat :83.8 g
 Berat kotor :133 g
 Ukuran kotak dalam:31*5.5*6.5cm



NO.1-17

Nama: Hook
 Warna: White
 Material produk: aluminium
 Aksesoris produk: sekrup + lem
 Net berat :115.5 g
 Berat kotor :176 g
 Ukuran kotak dalam:38*5.5*6.5cm



NO.1-18

Nama: Hook
 Warna: White
 Material produk: aluminium
 Aksesoris produk: sekrup + lem
 Net berat :144.8 g
 Berat kotor :216 g
 Ukuran kotak dalam:46*5.5*6.5cm



NO.1-19

Nama: Hook
 Warna: White
 Material produk: aluminium
 Aksesoris produk: sekrup + lem
 Net berat :175.7 g
 Berat kotor :257 g
 Ukuran kotak dalam:56*5.5*6.5cm

Packaging + Accessories



NO.1-26

Nama: Hook
 Warna: grey
 Material produk: aluminium
 Aksesoris produk: sekrup + lem
 Net berat :83.8 g
 Berat kotor :133 g
 Ukuran kotak dalam:31*5.5*6.5cm



NO.1-27

Nama: Hook
 Warna: grey
 Material produk: aluminium
 Aksesoris produk: sekrup + lem
 Net berat :115.5 g
 Berat kotor :176 g
 Ukuran kotak dalam:38*5.5*6.5cm



NO.1-28

Nama: Hook
 Warna: grey
 Material produk: aluminium
 Aksesoris produk: sekrup + lem
 Net berat :144.8 g
 Berat kotor :216 g
 Ukuran kotak dalam:46*5.5*6.5cm



NO.1-29

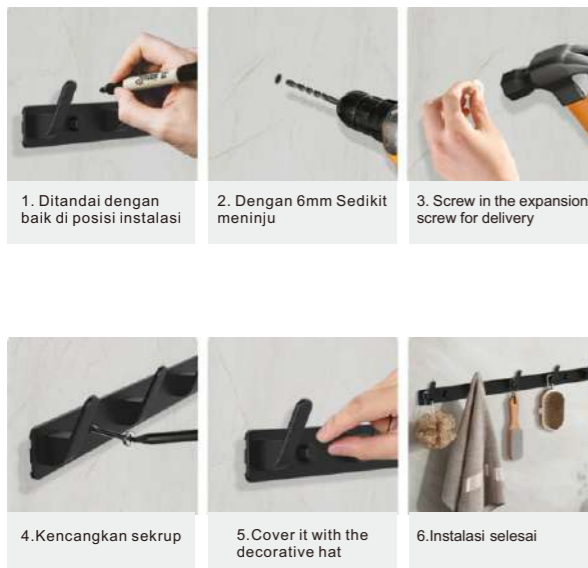
Nama: Hook
 Warna: grey
 Material produk: aluminium
 Aksesoris produk: sekrup + lem
 Net berat :175.7 g
 Berat kotor :257 g
 Ukuran kotak dalam:56*5.5*6.5cm

Packaging + Accessories



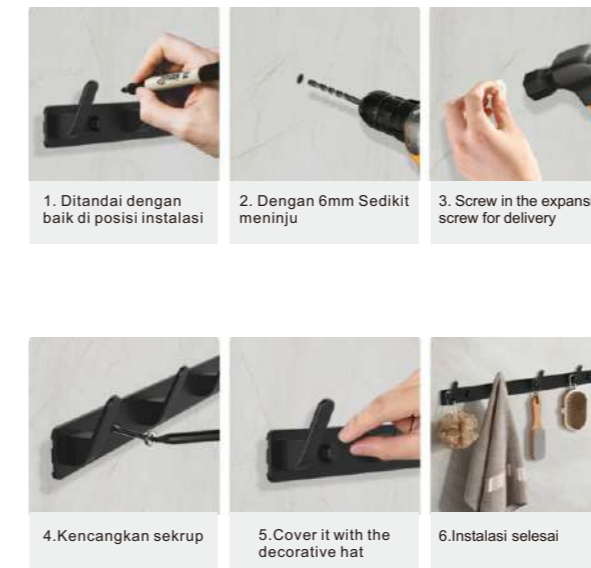
Sekrup pemasangan

Glue installation



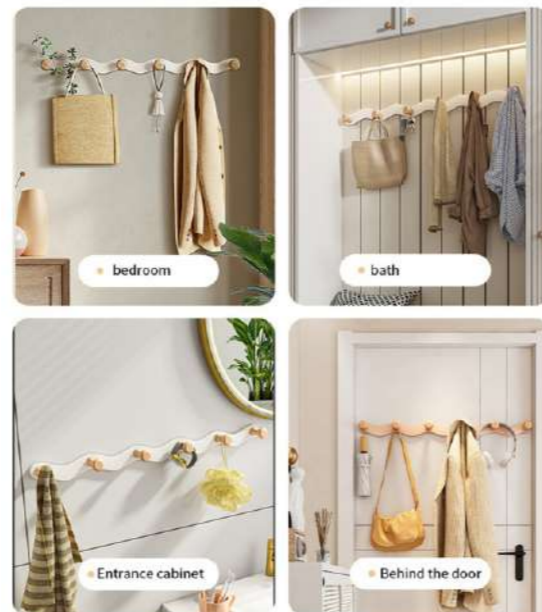
Sekrup pemasangan

Glue installation





Multi-scenario application



Carbon steel + wood:

Carbon steel + wood luar angkasa, tidak berkarat,

Multifungsi:

desain mode ini sangat cocok untuk kamar mandi, dapur, ruang tamu, jalan masuk, dan kantor.

Mudah dipasang:

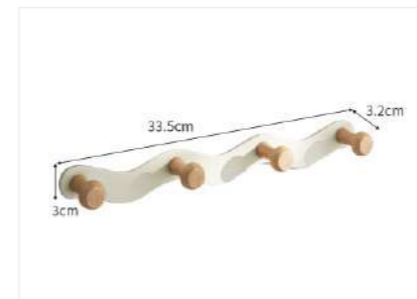
perangkat keras yang kita miliki. (pemasangan sekrup) pemasangan sekrup dan (jangan melubangi) lem agar produk tetap menarik secara estetika.

Adaptif:

batang kait ini dapat dipasang pada kebanyakan permukaan, masing-masing dapat menopang hingga berat 15 kg dan memenuhi kebutuhan suspensi anda

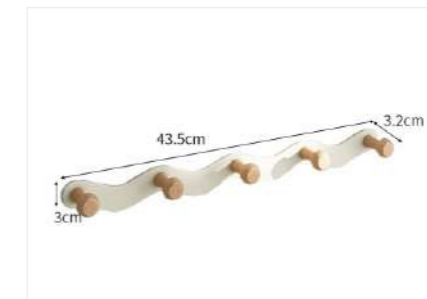
Pilihan warna:

pilihlah dari berbagai warna, termasuk putih,, untuk melengkapi perangkat keras rumah anda yang sudah ada.



NO.1-42

Nama: Hook
Warna: white
Material produk: Iron+ wood
Aksesoris produk: sekrup + lem
Net berat :139.4g
Berat kotor :181.9g
Ukuran kotak dalam:36*6*5.5cm



NO.1-43

Nama: Hook
Warna: white
Material produk: Iron+ wood
Aksesoris produk: sekrup + lem
Net berat :176.2 g
Berat kotor :230 g
Ukuran kotak dalam:45*6*5.5cm



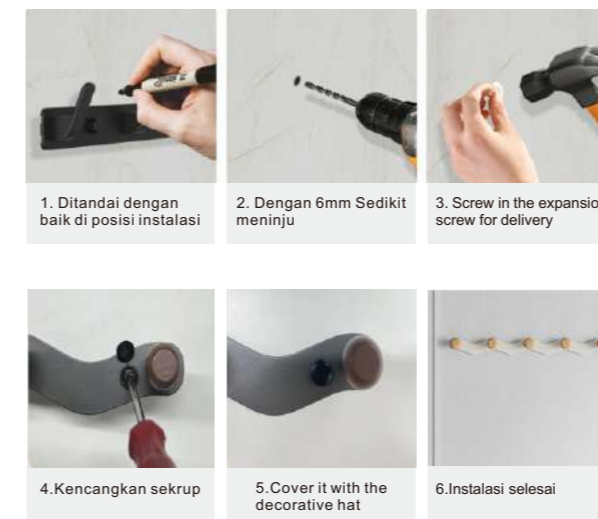
NO.1-44

Nama: Hook
Warna: white
Material produk: Iron+ wood
Aksesoris produk: sekrup + lem
Net berat :215.4 g
Berat kotor :276.7 g
Ukuran kotak dalam:56*6*5.5cm

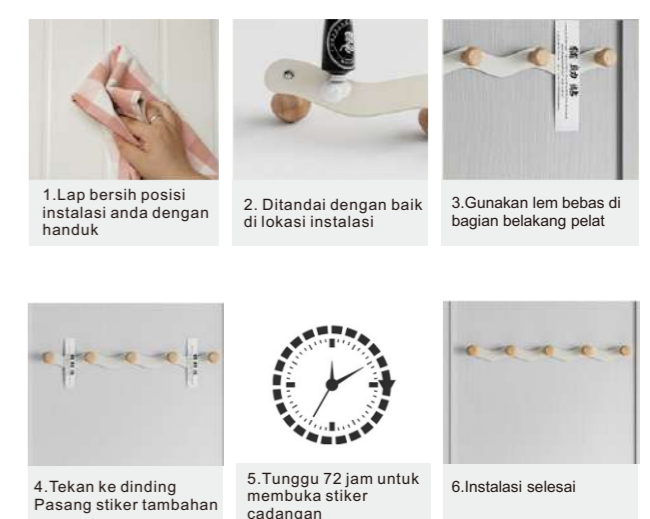
Packaging + Accessories



Sekrup pemasangan



Glue installation





Carbon steel + wood:

Carbon steel + wood luar angkasa, tidak berkarat,

Multifungsi:

desain mode ini sangat cocok untuk kamar mandi, dapur, ruang tamu, jalan masuk, dan kantor.

Mudah dipasang:

perangkat keras yang kita miliki. (pemasangan sekrup) pemasangan sekrup dan (jangan melubangi) lem agar produk tetap menarik secara estetika.

Adaptif:

batang kait ini dapat dipasang pada kebanyakan permukaan, masing-masing dapat menopang hingga berat 15 kg dan memenuhi kebutuhan suspensi anda

Pilihan warna:

pilihlah dari berbagai warna, termasuk putih,, untuk melengkapi perangkat keras rumah anda yang sudah ada.



NO.1-65

Nama: Hook
Warna: black
Material produk: Iron+ wood
Aksesoris produk: sekrup + lem
Net berat :198g
Berat kotor :252g
Ukuran kotak dalam:39.5*6*5.5cm



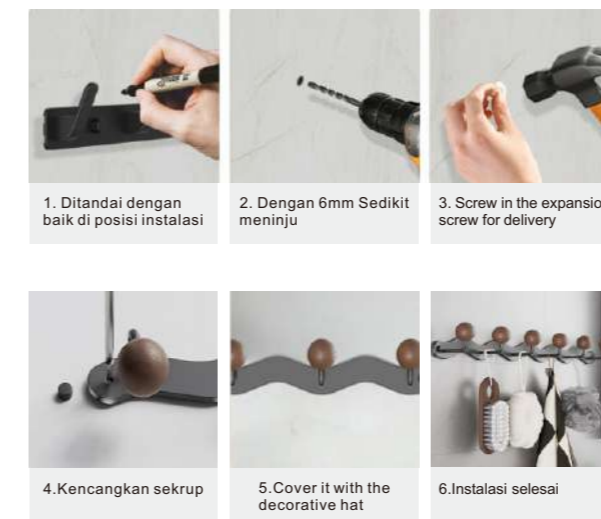
NO.1-66

Nama: Hook
Warna: black
Material produk: Iron+ wood
Aksesoris produk: sekrup + lem
Net berat :244g
Berat kotor :308g
Ukuran kotak dalam:50*6*5.5cm

Packaging + Accessories

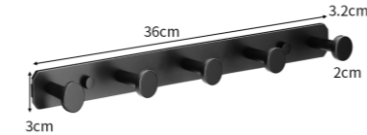


Sekrup pemasangan



Glue installation

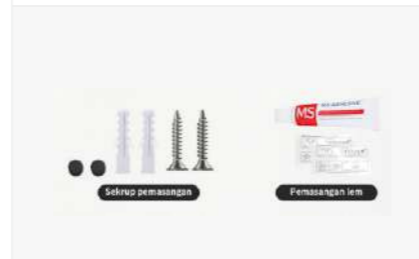




NO.1-55

Nama: Hook
 Warna: black
 Material produk: Iron
 Aksesoris produk: sekrup + lem
 Net berat :106g
 Berat kotor :156g
 Ukuran kotak dalam:36.6*6*5.5cm

Packaging + Accessories



Besi:

Besi:Besi, bukan karat,

Mudah dipasang:

perangkat keras yang kita miliki. (pemasangan sekrup) pemasangan sekrup dan (jangan melubangi) lem agar produk tetap menarik secara estetika.

Sekrup pemasangan



Glue installation



NO.1-75

Nama: Hook
 Warna: black
 Material produk: Iron + aluminium
 Net berat :480g
 Berat kotor :550g
 Ukuran kotak dalam:42*5.5*10.2cm

Packaging + Accessories



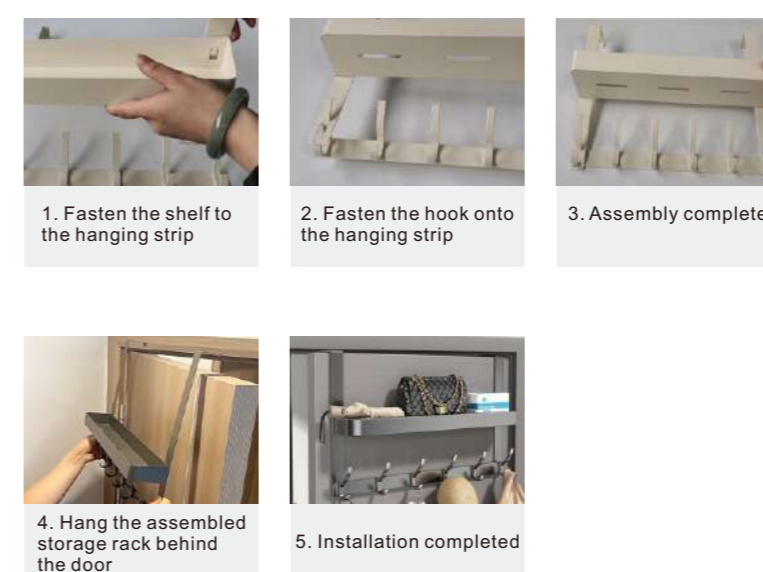
Besi:

Besi:Besi, bukan karat,

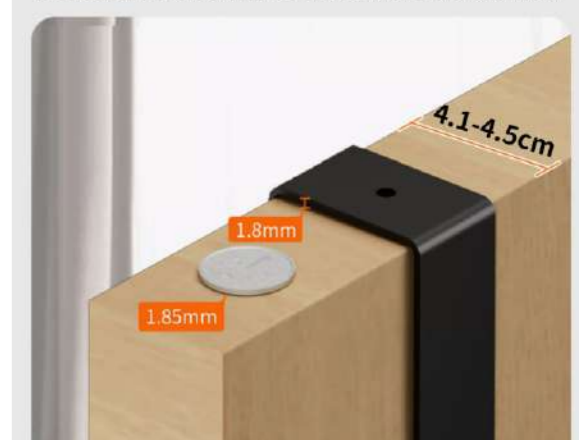
Multifungsi:

Polanya sangat cocok di belakang pintu, kamar mandi, dengan 15 kilo per produk

Sekrup pemasangan



1.The original is suitable for door panels with a thickness of 4.1-4.5CM.
 2.The top of the door must not be uneven, and the gap between the doors should be thicker than a one-yuan coin





NO.1-51
 Nama: Hook
 Warna: Brushed color
 Material produk: Stainless steel
 Aksesoris produk: Sticker installation



Bahannya dari stainless steel:
 Stainless steel, tahan kelembaban, tahan karat,

Mudah dipasang:
 Perangkat keras yang kita punya. (tidak ada lubang) stiker terpasang, mudah dipasang



NO.1-90
 Nama: Hook
 Warna: black
 Material produk: Aluminium
 Net berat :70g

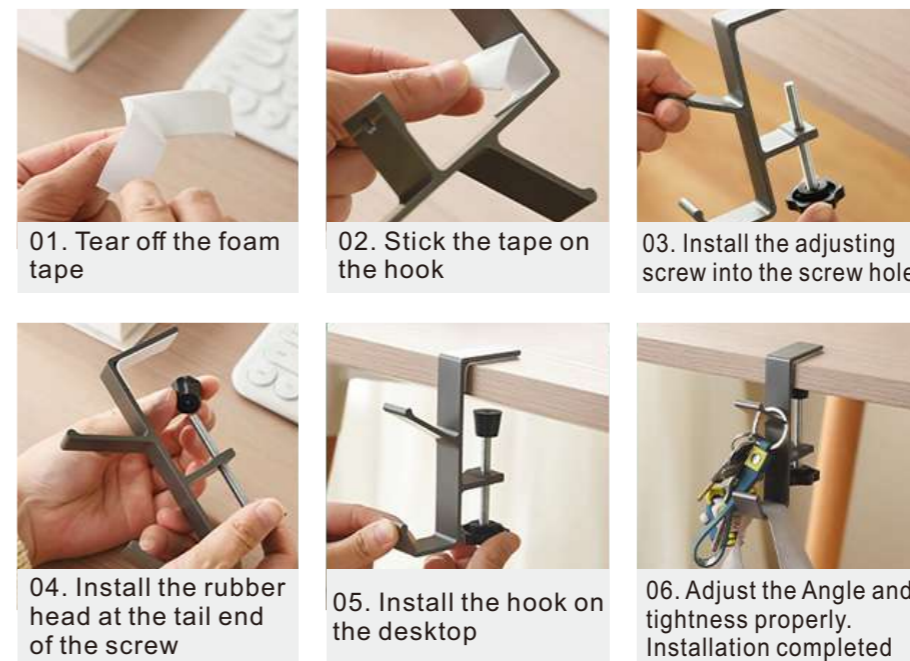
Substansi aluminium:
 Aluminium luar angkasa, tak berkarat, cocok di meja

Jarak instalasi:
 Adjustable range: 0.8-2.8cm



Substansi aluminium:
 Aluminium luar angkasa, tak berkarat, cocok di meja

Jarak instalasi:
 Pakai hitam kecil, pasKetebalan meja adalah 5cm. Itu punya satu yang besarDaerah stres yang luas, lebih stabil.Adjustable range: 0.8-6.8cm



NO.1-80
 Nama: Hook
 Warna: black
 Material produk: Aluminium
 Net berat :70g



NO.21-16
 Nama: Hook
 Warna: Brushed color
 Material produk: Stainless steel
 Aksesoris produk: Sticker installation
 Net berat :61 g
 Number: 16



NO.25
 Nama: Hook
 Warna: Brushed color
 Material produk: Stainless steel
 Aksesoris produk: Sticker installation
 Net berat :5.2 g



NO.22-16
 Nama: Hook
 Warna: Brushed color
 Material produk: Stainless steel
 Aksesoris produk: Sticker installation
 Net berat :61 g
 Number: 16



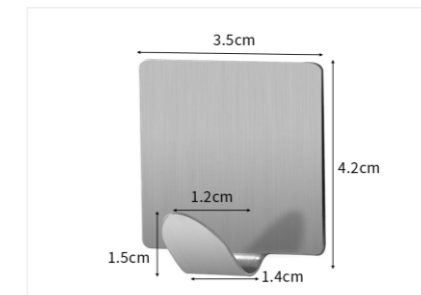
NO.23-16
 Nama: Hook
 Warna: Brushed color
 Material produk: Stainless steel
 Aksesoris produk: Sticker installation
 Net berat :61 g
 Number: 16



NO.24-16
 Nama: Hook
 Warna: Brushed color
 Material produk: Stainless steel
 Aksesoris produk: Sticker installation
 Net berat :61 g
 Number: 16



NO.26
 Nama: Hook
 Warna: Brushed color
 Material produk: Stainless steel
 Aksesoris produk: Sticker installation
 Net berat :5.2 g



NO.27
 Nama: Hook
 Warna: Brushed color
 Material produk: Stainless steel
 Aksesoris produk: Sticker installation
 Net berat :6 g



NO.28
 Nama: Hook
 Warna: Brushed color
 Material produk: Stainless steel
 Aksesoris produk: Sticker installation
 Net berat :7.2 g

Bahannya dari stainless steel:

Stainless steel, tahan kelembaban, tahan karat,

Mudah dipasang:

pPerangkat keras yang kita punya. (tidak ada lubang) stiker terpasang, mudah dipasang

Multifungsi:

desain mode ini sangat cocok untuk kamar mandi, dapur, ruang tamu, jalan masuk, dan kantor.



01. Wipe the wall clean with a towel



02. Tear off the sticker behind the hook



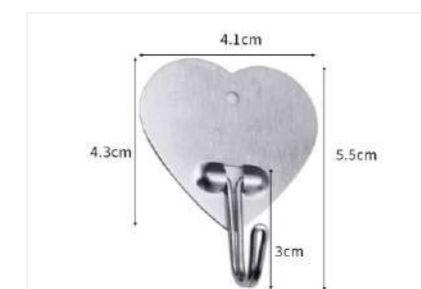
03. Press the hook onto the wall



Waiting 24 hours



NO.29
 Nama: Hook
 Warna: Chrome
 Material produk: Stainless
 Aksesoris produk: sekrup + lem
 Net berat :7.9 g



NO.30
 Nama: Hook
 Warna: Chrome
 Material produk: Stainless
 Aksesoris produk: sekrup + lem
 Net berat :7 g



NO.31
 Nama: Hook
 Warna: Chrome
 Material produk: Stainless
 Aksesoris produk: sekrup + lem
 Net berat :8.1 g



NO.32-2
 Nama: Hook
 Warna: Brushed color
 Material produk: Stainless steel
 Number: 2
 2 kartu/berat: 60.9 g

NO.33-2
 Nama: Hook
 Warna: Brushed color
 Material produk: Stainless steel
 Number: 2

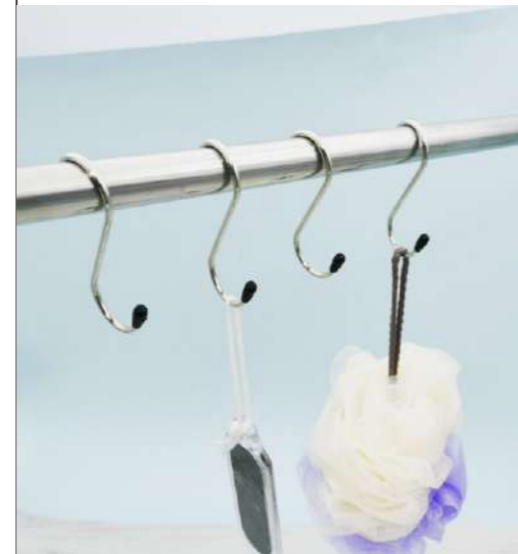
NO.34-2
 Nama: Hook
 Warna: Black
 Material produk: Stainless steel
 Aksesori produk: Sticker installation
 Net berat : 40 g
 Number: 2

NO.35-2
 Nama: Hook
 Warna: Black
 Material produk: Stainless steel
 Aksesori produk: Sticker installation
 Net berat : 35.2 g
 Number: 2

NO.36-2
 Nama: Hook
 Warna: Black
 Material produk: Stainless steel
 Aksesori produk: Sticker installation
 Net berat : 40 g
 Number: 2

NO.37-2
 Nama: Hook
 Warna: Black
 Material produk: Stainless steel
 Aksesori produk: Sticker installation
 Net berat : 56.6 g
 Number: 2

NO.38-2
 Nama: Hook
 Warna: Black
 Material produk: Stainless steel
 Aksesori produk: Sticker installation
 Net berat : 46.7 g
 Number: 2



NO.39-3
 Nama: Hook
 Warna: Black
 Material produk: Stainless steel
 Aksesori produk: Sticker installation
 Net berat : 42.1 g
 Number: 3

NO.40-3
 Nama: Hook
 Warna: Black
 Material produk: Stainless steel
 Aksesori produk: Sticker installation
 Net berat : 54.7 g
 Number: 3

NO.41-3
 Nama: Hook
 Warna: Black
 Material produk: Stainless steel
 Aksesori produk: Sticker installation
 Net berat : 48.1 g
 Number: 3

NO.42-3
 Nama: Hook
 Warna: Brushed color
 Material produk: Stainless steel
 Net berat : 35 g
 Number: 3

NO.43-6
 Nama: Hook
 Warna: Black
 Material produk: Stainless steel
 Aksesori produk: Sticker installation
 Net berat : 46.7 g
 Number: 6

Bahannya dari stainless steel:
 Stainless steel, tahan kelembaban,
 tahan karat,

Mudah dipasang:
 pPerangkat keras yang kita punya.
 (tidak ada lubang) stiker terpasang,
 mudah dipasang

Multifungsi:
 desain mode ini sangat cocok untuk
 kamar mandi, dapur, ruang tamu,
 jalan masuk, dan kantor.



01. Wipe the wall clean with a towel



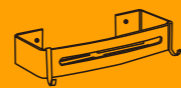
02. Tear off the sticker behind the hook



03. Press the hook onto the wall



Waiting 24 hours



Material alumunium ruang:

6063# material aluminium luar angkasa, tidak berkarat,

Multifungsi:

desain mode ini sangat cocok untuk kamar mandi, dapur, ruang tamu, jalan masuk, dan kantor.

Mudah dipasang:

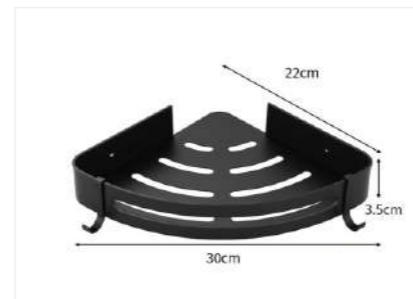
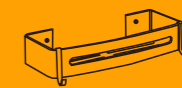
perangkat keras yang kita miliki. (pemasangan sekrup) pemasangan sekrup dan (jangan melubangi) lem agar produk tetap menarik secara estetika.

Adaptif:

Rangkanya dapat dipasang pada kebanyakan permukaan, masing-masing dapat menopang berat 15 kilogram dan memenuhi kebutuhan suspensi anda

Pilihan warna:

pilihlah dari berbagai warna, termasuk hitam, putih, dan abu-abu, untuk melengkapi perangkat keras rumah anda yang sudah ada.



NO.2-1

Nama: Bathroom storage rack
 Warna: Black
 Material produk: aluminium
 Aksesoris produk: sekrup + lem
 Net berat :59.2 g
 Berat kotor :84.8 g
 Ukuran kotak dalam:22*5.5*6cm



NO.2-4

Nama: Bathroom storage rack
 Warna: Silver
 Material produk: aluminium
 Aksesoris produk: sekrup + lem
 Net berat :81.6g
 Berat kotor :115g
 Ukuran kotak dalam:32*5.5*6.5cm

Packaging + Accessories



NO.2-11

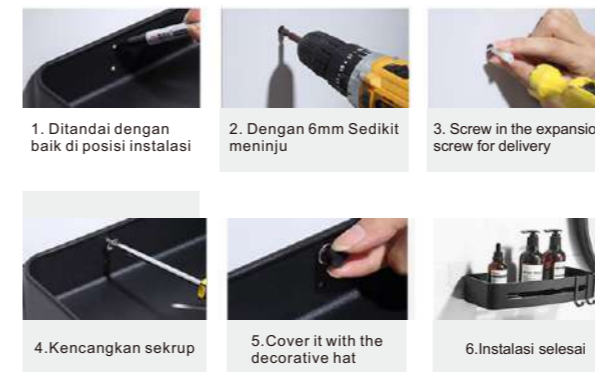
Nama: Bathroom storage rack
 Warna: Black
 Material produk: aluminium
 Aksesoris produk: sekrup + lem
 Net berat :113.9g
 Berat kotor :164.8g
 Ukuran kotak dalam::52*5.5*6.5cm



NO.2-14

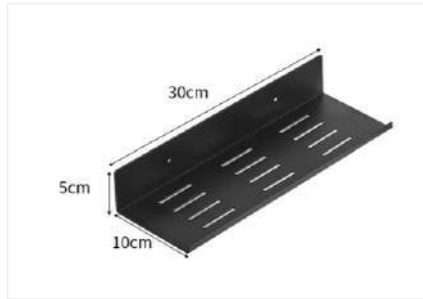
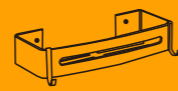
Nama: Bathroom storage rack
 Warna: Silver
 Material produk: aluminium
 Aksesoris produk: sekrup + lem
 Net berat :153.4g
 Berat kotor :220.4g
 Ukuran kotak dalam:70.5*32.5*57cm

Sekrup pemasangan

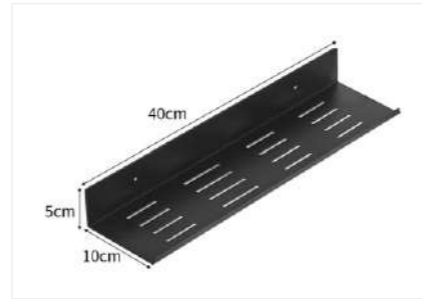


Glue installation

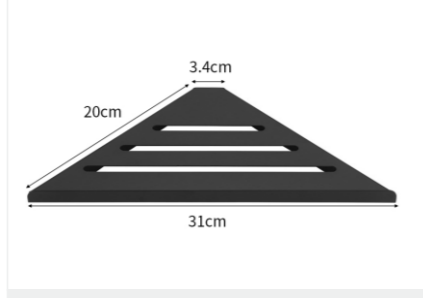




NO.2-21
 Nama: Bathroom storage rack
 Warna: Black 30cm
 Material produk: iron
 Aksesoris produk: sekrup + lem
 Net berat :270g
 Berat kotor :359g
 Ukuran kotak dalam:31.5*11*6cm



NO.2-21
 Nama: Bathroom storage rack
 Warna: Black 40cm
 Material produk: iron
 Aksesoris produk: sekrup + lem
 Net berat :362g
 Berat kotor :467g
 Ukuran kotak dalam:41.5*11*6cm



NO.2-31
 Nama: Bathroom storage rack
 Warna: Black
 Material produk: iron
 Aksesoris produk: sekrup + lem
 Net berat :258g
 Berat kotor :366g
 Ukuran kotak dalam:34*19*3.5cm

Packaging + Accessories



Sekrup pemasangan

1. Ditandai dengan baik di posisi instalasi
2. Dengan 6mm Sedikit meninju
3. Screw in the expansion screw for delivery
4. Kencangkan sekrup
5. Cover it with the decorative hat
6. Instalasi selesai

Glue installation

1. Lap bersih posisi instalasi anda dengan handuk
2. Ditandai dengan baik di lokasi instalasi
3. Gunakan lem bebas di bagian belakang pelat
4. Tekan ke dinding Pasang stiker tambahan
5. Tunggu 72 jam untuk membuka stiker cadangan
6. Instalasi selesai



NO.2-41
 Nama: Bathroom storage rack
 Warna: Black
 Material produk: iron
 Aksesoris produk: sekrup + lem

Besi mavenPenahan besi:
 Besi mavenPenahan besi, penahan multi guna

Multifungsi:
 desain mode ini sangat cocok untuk kamar mandi, dapur, ruang tamu, jalan masuk, dan kantor.

Mudah dipasang:
 perangkat keras yang kita miliki. (pemasangan sekrup) pemasangan sekrup dan (jangan melubangi) lem agar produk tetap menarik secara estetika.

Packaging + Accessories



Sekrup pemasangan

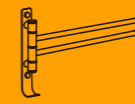
1. Ditandai dengan baik di posisi instalasi
2. Dengan 6mm Sedikit meninju
3. Screw in the expansion screw for delivery
4. Kencangkan sekrup
5. Cover it with the decorative hat
6. Instalasi selesai

Glue installation

1. Lap bersih posisi instalasi anda dengan handuk
2. Ditandai dengan baik di lokasi instalasi
3. Gunakan lem bebas di bagian belakang pelat
4. Tekan ke dinding Pasang stiker tambahan
5. Tunggu 72 jam untuk membuka stiker cadangan
6. Instalasi selesai

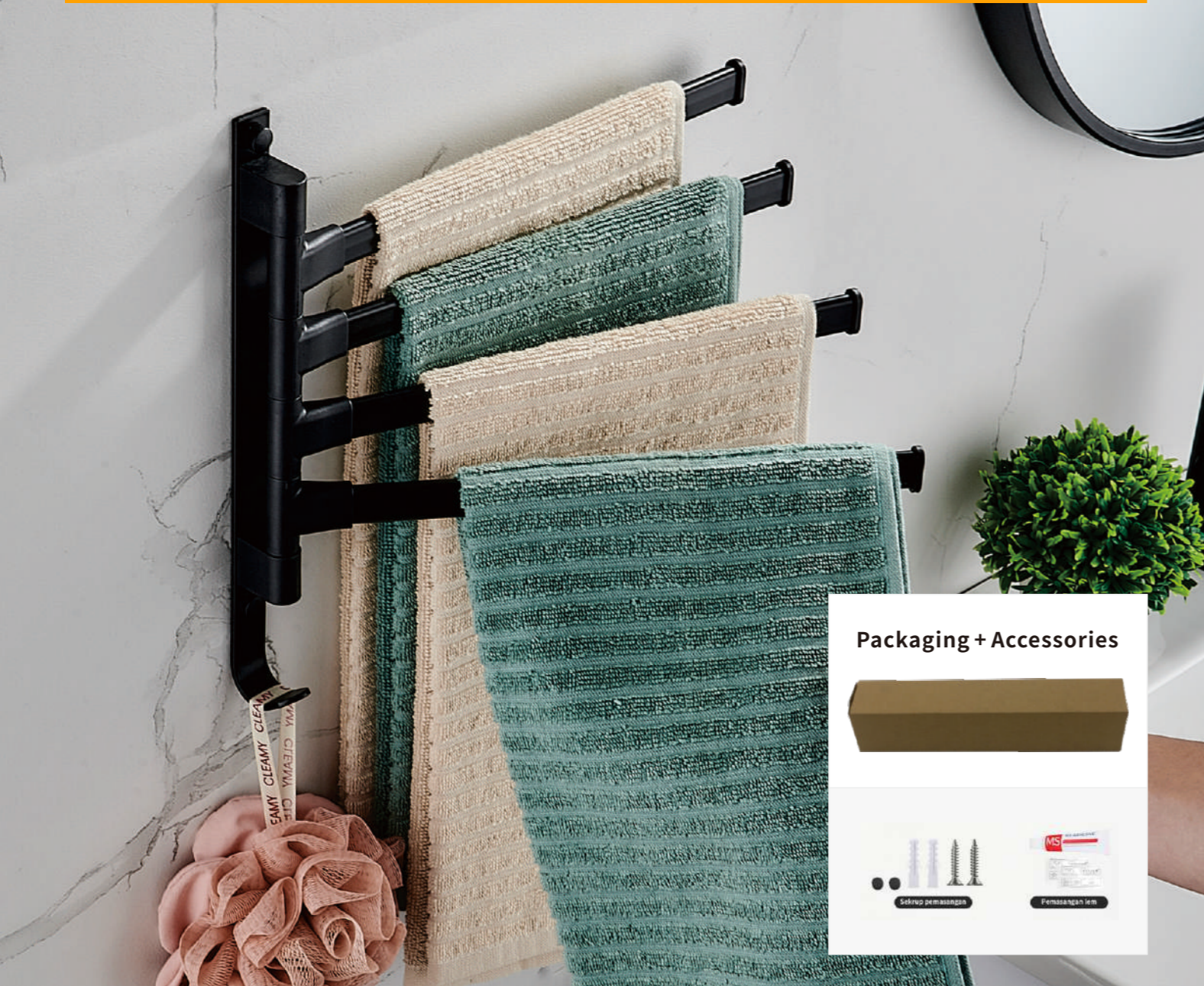
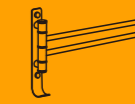
Pano.V

Towel rack



Pano.V

Towel rack



Packaging + Accessories



【 Easy to install and Use 】:

This towel rack is made of high-quality iron and ABS, which is sturdy and corrosion-resistant. It comes with screws, plastic expansion pipe fittings and decorative covers, making installation convenient.

【 5 in 1 Towel Rack】:

This rotatable towel rack makes it convenient for you to dry towels layer by layer to prevent them from getting damp. The bottom is equipped with hooks for hanging bath balls, brushes, etc.

【 180° Rotating Rod 】:

This rotatable towel rack makes it convenient for you to dry towels layer by layer to prevent them from getting damp. The bottom is equipped with hooks for hanging bath balls, brushes, etc.



NO.3-1

Nama: Rotate the towel pole
Warna: Black
Material produk: Iron +ABS
Aksesoris produk: sekrup + lem
Net berat :179g
Berat kotor :313g
Ukuran kotak dalam:26.5*34*3.5cm



NO.3-2

Nama: Rotate the towel pole
Warna: Black
Material produk: Iron +ABS
Aksesoris produk: sekrup + lem
Net berat :242g
Berat kotor :431g
Ukuran kotak dalam:35*36*3cm



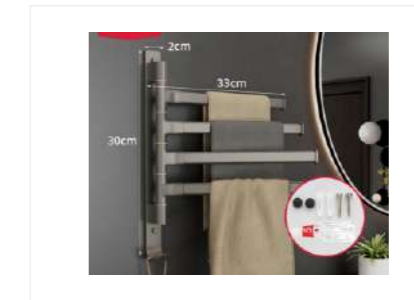
NO.3-3

Nama: Rotate the towel pole
Warna: Black
Material produk: aluminium
Aksesoris produk: sekrup + lem
Net berat :315g
Berat kotor :470g
Ukuran kotak dalam:34*34*3.5cm



NO.3-4

Nama: Rotate the towel pole
Warna: Grey
Material produk: Iron +ABS
Aksesoris produk: sekrup + lem
Net berat :179g
Berat kotor :313g
Ukuran kotak dalam:26.5*34*3.5cm



NO.3-5

Nama: Rotate the towel pole
Warna: Grey
Material produk: Iron +ABS
Aksesoris produk: sekrup + lem
Net berat :242g
Berat kotor :431g
Ukuran kotak dalam:35*36*3cm



NO.3-6

Nama: Rotate the towel pole
Warna: Grey
Material produk: aluminium
Aksesoris produk: sekrup + lem
Net berat :315g
Berat kotor :470g
Ukuran kotak dalam:34*34*3.5cm

Sekrup pemasangan

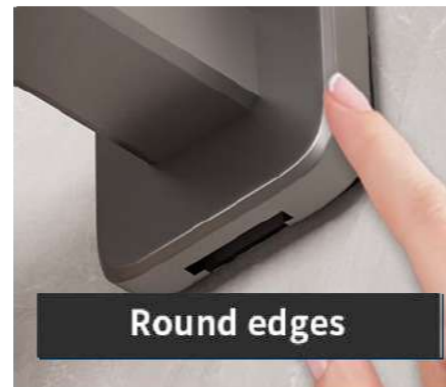


Glue installation



Pano.V

Towel rack



【 Easy to install and Use 】:

This towel rack is made of high-quality iron and ABS, which is sturdy and corrosion-resistant. It comes with screws, plastic expansion pipe fittings and decorative covers, making installation convenient.

【 5 in 1 Towel Rack 】:

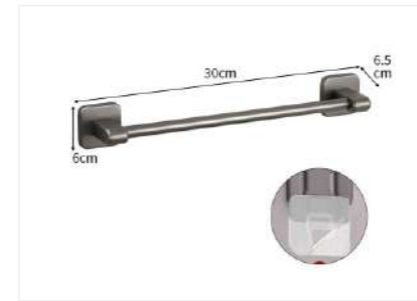
This rotatable towel rack makes it convenient for you to dry towels layer by layer to prevent them from getting damp. The bottom is equipped with hooks for hanging bath balls, brushes, etc.

【 180° Rotating Rod 】:

This rotatable towel rack makes it convenient for you to dry towels layer by layer to prevent them from getting damp. The bottom is equipped with hooks for hanging bath balls, brushes, etc.

Pano.V

Towel rack



NO.3-11

Nama: Bar handuk
Warna: Black
Material produk: Bar handuk +ABS
Aksesoris produk: Adhesive tape



NO.3-12

Nama: Bar handuk
Warna: Black
Material produk: Bar handuk +ABS
Aksesoris produk: Adhesive tape



NO.3-13

Nama: Bar handuk
Warna: Black
Material produk: Bar handuk +ABS
Aksesoris produk: Adhesive tape



NO.3-14

Nama: Bar handuk
Warna: Black
Material produk: Bar handuk +ABS
Aksesoris produk: Adhesive tape

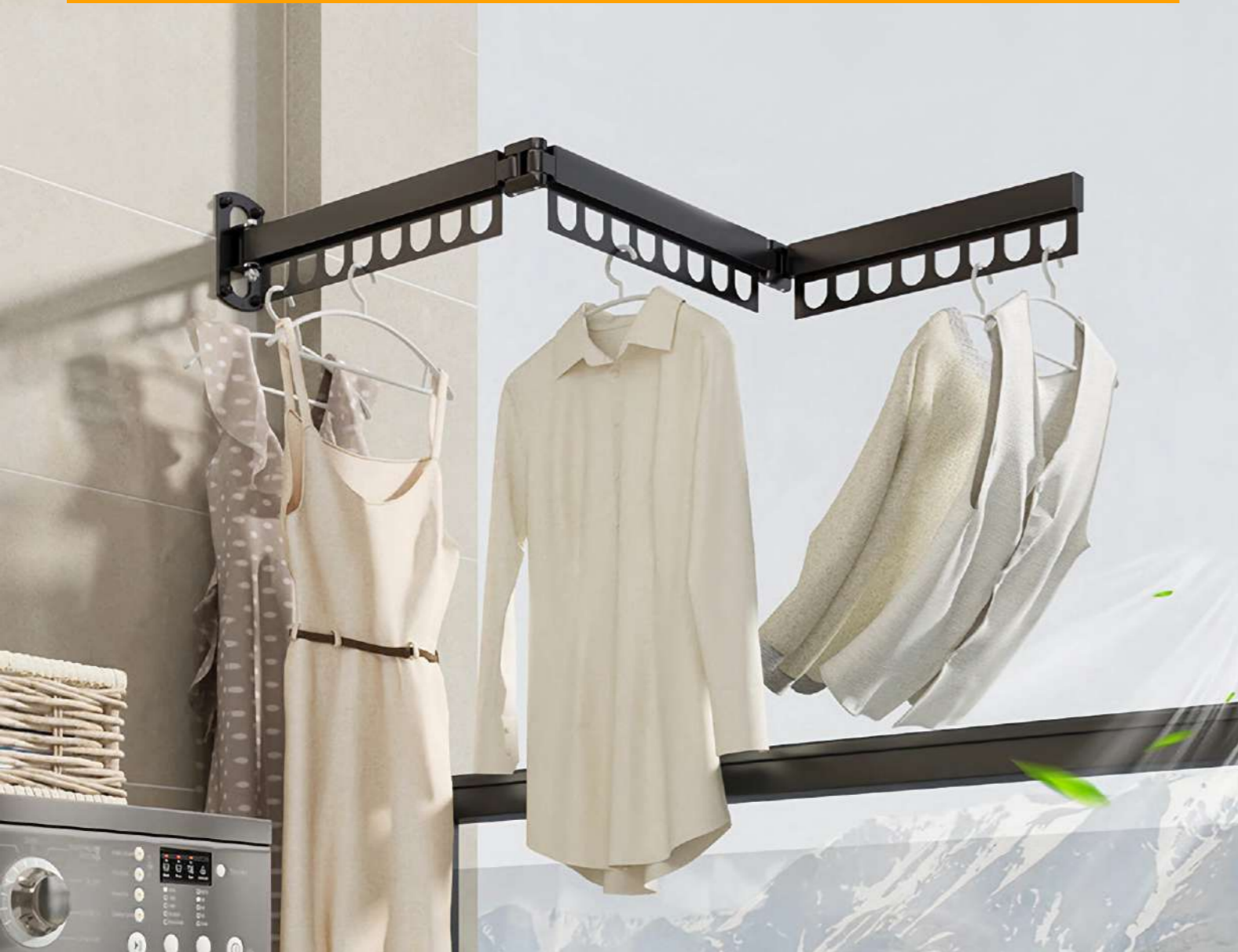
Packaging + Accessories



Adhesive tape Installation

Tak ada sidik jari





[QUALITY MATERIAL] :

The foldable coat rack is made of titanium steel, with corrosion resistance and strong hardness. ,suitable for different styles of home style.

[SIZE] :

There are 3 sections in total. It comes with 18 hooks underneath for hanging clothes.

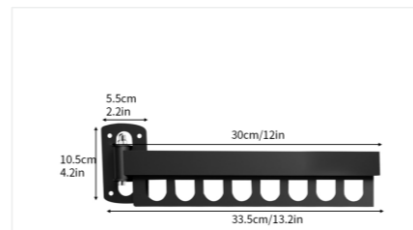
[SAVING SPACE] :

Triple folding folding drying rack can greatly save the indoor activity space, when you don't need to dry the clothes to the side of the wall to return the rack to the wall, occupying a very small area of space,

[WAYS OF INSTALLATION] :

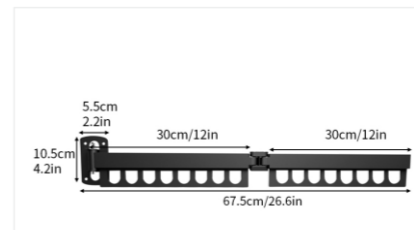
This collapsible coat rack supports both drilling .

Drilling type determine the fixed position first, then drill the screws into the wall and you are done.



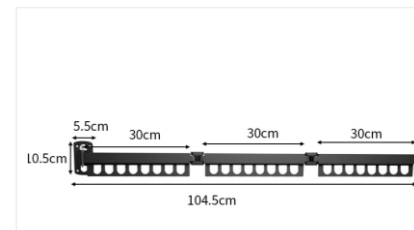
NO.4-3

Nama:Lipat rak penjemur
Warna: Black
Material produk: iron
Aksesoris produk: sekrup
Net berat :370g
Ukuran kotak dalam:11.6*3.5*34.4cm



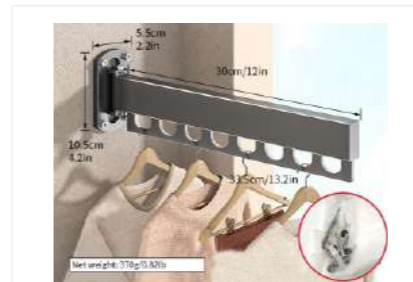
NO.4-2

Nama:Lipat rak penjemur
Warna: Black
Material produk: iron
Aksesoris produk:sekrup
Net berat :670g
Ukuran kotak dalam:11.6*5.3*36.9cm



NO.4-1

Nama:Lipat rak penjemur
Warna: Black
Material produk: iron
Aksesoris produk: sekrup
Net berat :980g
Ukuran kotak dalam:11.5*8*38cm



NO.4-4

Nama:Lipat rak penjemur
Warna: grey
Material produk: iron
Aksesoris produk: sekrup
Net berat :370g
Ukuran kotak dalam:11.6*3.5*34.4cm



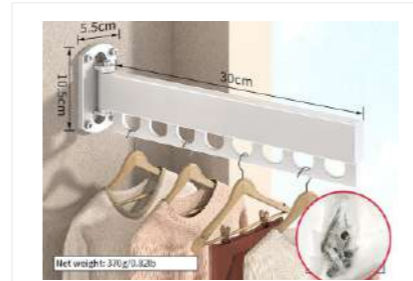
NO.4-5

Nama:Lipat rak penjemur
Warna: grey
Material produk: iron
Aksesoris produk: sekrup
Net berat :670g
Ukuran kotak dalam:11.6*5.3*36.9cm



NO.4-6

Nama:Lipat rak penjemur
Warna: grey
Material produk: iron
Aksesoris produk: sekrup
Net berat :980g
Ukuran kotak dalam:11.5*8*38cm



NO.4-7

Nama:Lipat rak penjemur
Warna: white
Material produk: iron
Aksesoris produk: sekrup
Net berat :370g
Ukuran kotak dalam:11.6*3.5*34.4cm



NO.4-8

Nama:Lipat rak penjemur
Warna: white
Material produk: iron
Aksesoris produk: sekrup
Net berat :670g
Ukuran kotak dalam:11.6*5.3*36.9cm



NO.4-9

Nama:Lipat rak penjemur
Warna: white
Material produk: iron
Aksesoris produk: sekrup
Net berat :980g
Ukuran kotak dalam:11.5*8*38cm



QUALITY MATERIAL :

The foldable coat rack is made of titanium steel, with corrosion resistance and strong hardness. ,suitable for different styles of home style.

SIZE :

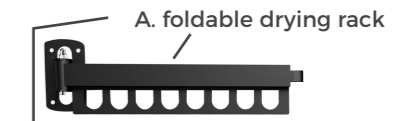
There are 3 sections in total. It comes with 18 hooks underneath for hanging clothes.

APPLICABLE SCENE:

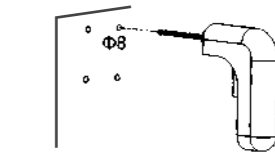
The foldable drying rack can be used as clothes drying or clothes organizing. Suitable for balcony, bathroom, laundry room or bedroom by the window. This clothes rack is rotatable, you can adjust the direction to expose your clothes to more sunlight.



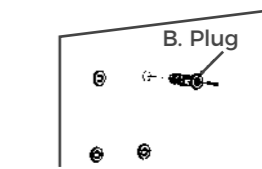
1. Take the shelf, attach it to the wall where you want to hang it, and use a pencil to mark the location of the drill holes on the wall.



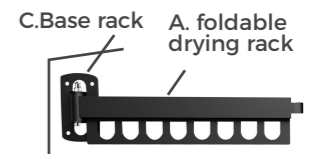
2. Use an electric drill and drill holes in the marked areas. Pay attention to safety when drilling.



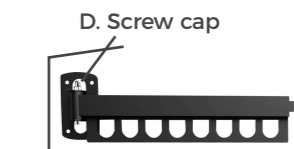
3. Insert the wall plug into the hole drilled in the wall.



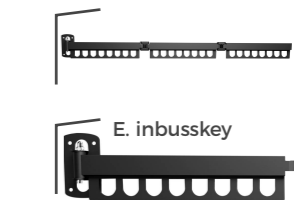
4. Place the rack on the plug, and screw the screws through the rack into the wall-mounted plug to keep the rack suspended



5. Fasten screw C using a Phillips screwdriver, and place cover D in the position where the screw hole is located.



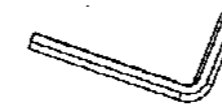
6. After installation, move the rack to the correct Angle and adjust the screws with E (inbuskey) to ensure that the rack is properly installed



Note: Before drilling, ensure that the wall can withstand the drilling pressure and avoid drilling on fragile surfaces such as glass walls. It is recommended to drill holes on wood, plaster, and cement walls.



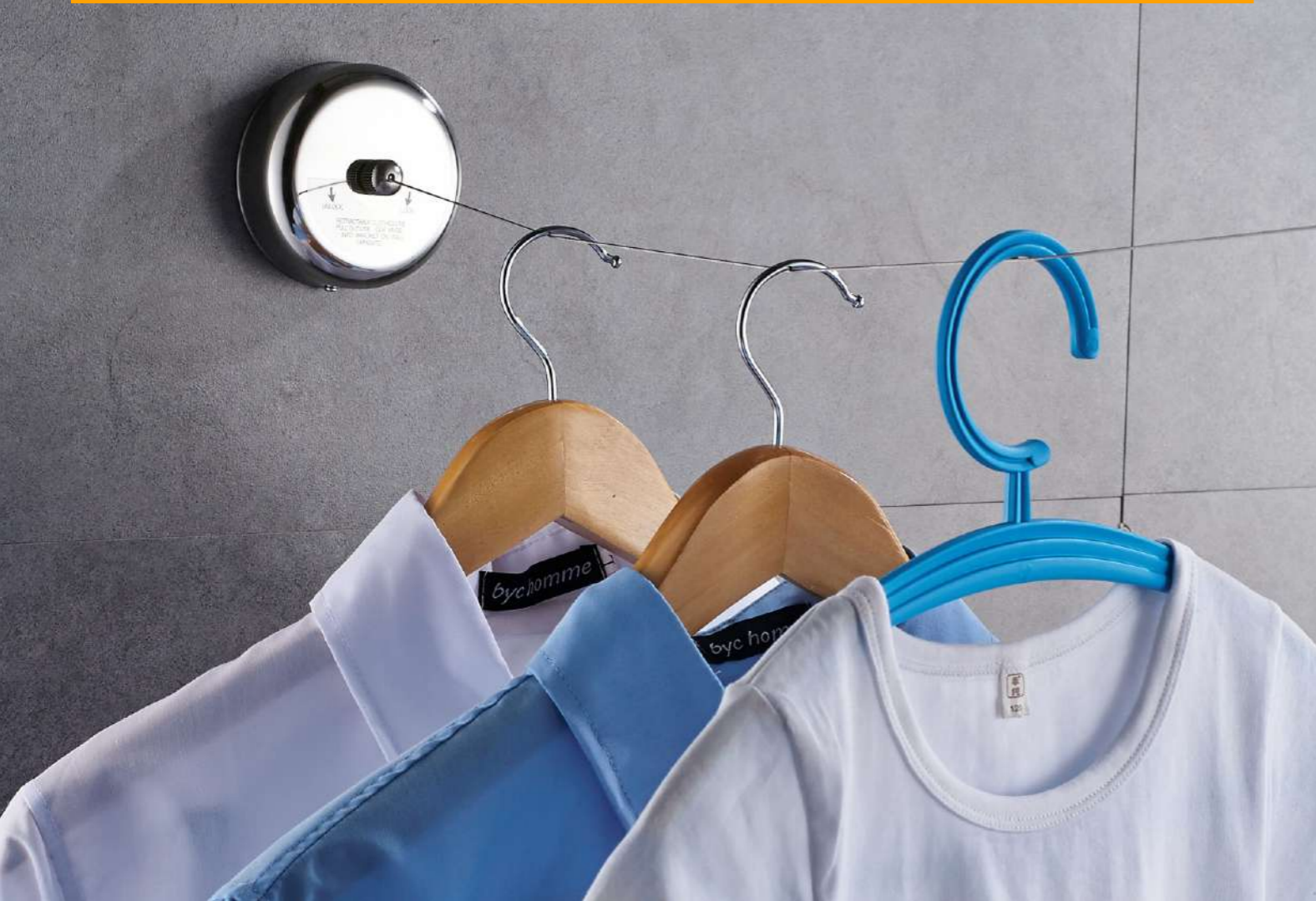
Screw Caps X 4



Inbuskey X1

Packaging + Accessories





Time-Proof:

The surface of the clothesline's main body and the steel wire are made of 304 stainless steel,

Retractable: :

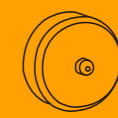
The heavy duty clothesline is auto retractable, the adjustable stainless steel line can extend up to about 2.8 m. Note: Please tighten the nut after you pull the clothesline out. Based on the length, please roughly determine whether it meets the space you want to use

Save Space:

The clothes line is very small, use it when you need it and easily put back into the shell when you are not using it, which is convenient and does not take up space. Please note that this retractable clothesline requires wall drilling to install

Widespread Use:

The retractable clothesline is widely used for hanging wet bathing suits, baby clothes, delicates and some others that can't be machine dried. Great addition to any home, hotel, indoors & outdoors, laundry, balcony, shower room, bathroom and boat



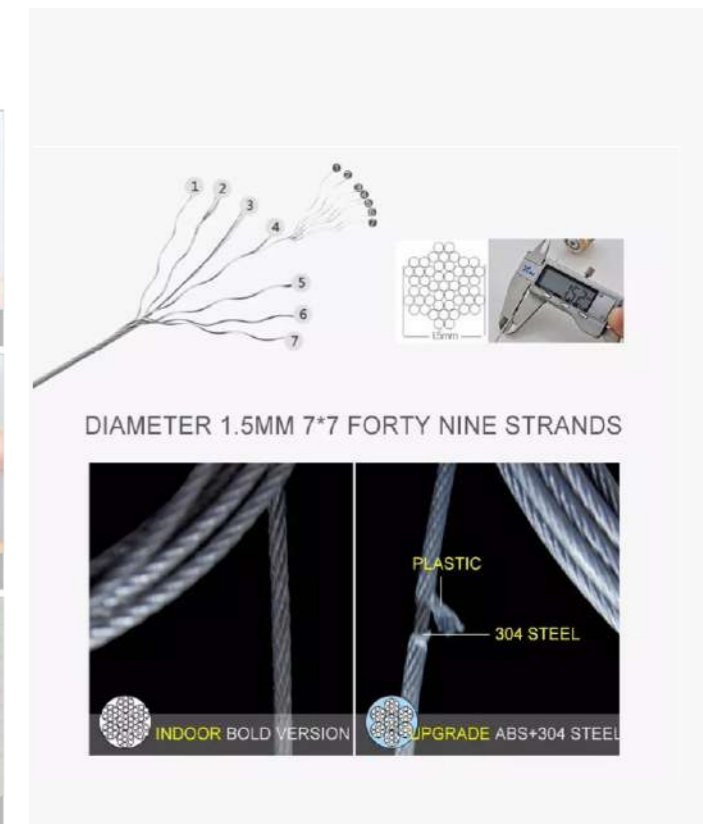
NO.4-11

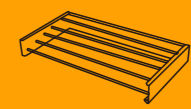
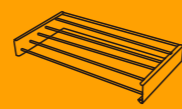
Nama: 2.8m Clothesline
 Warna: Electroplating
 Material produk: 304 Stainless steel
 Aksesori produk: sekrup
 Net berat :280g
 Ukuran kotak dalam: 9.7*5.7*9.7cm



Packaging + Accessories

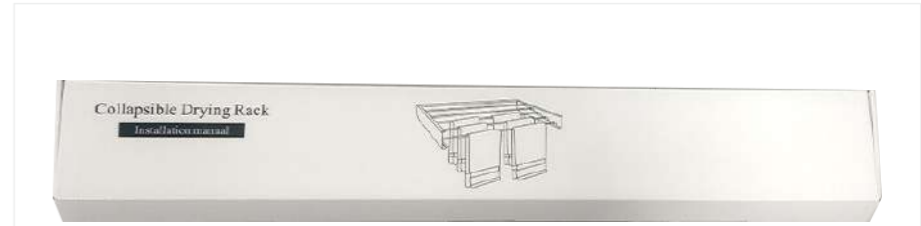
Sekrup pemasangan





NO.4-20

Nama:Folding clothes drying rack
 Warna: Black
 Material produk:Aluminum + iron
 Aksesoris produk: sekrup
 Net berat :2750g
 Ukuran kotak dalam:86*12*3.5cm



Packaging + Accessories

Heavy Duty & Sturdy:

5 drying rods of the foldable clothes drying rack are made from premium aluminium

Floor Space Saver:

Very easy to extend and retract. Smooth and quiet when expanding or pushing it in. This laundry rack folds neatly against the wall when not in use, freeing up the floor space and you will forget it is there. Air dry in a small space and keep your floor space uncluttered and unobstructed

Stylish Appearance:

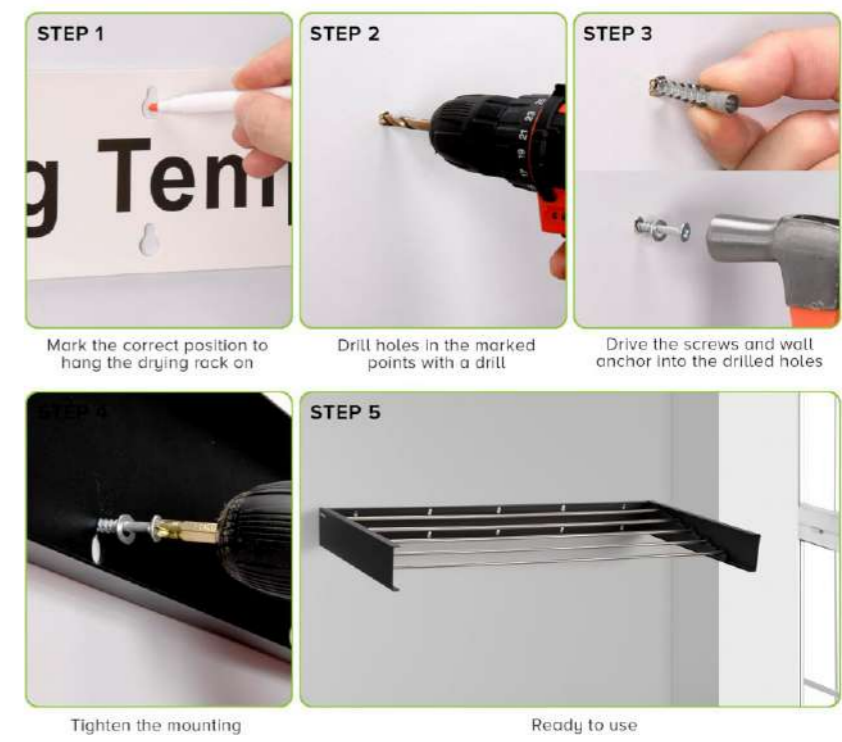
clothes rack drying comes pre-assembled and only requires drilling and installation onto the wall to be ready for use.

Widespread Use:

expandable clothes drying rack is a must-have for every laundry room. Lots of space for drying towels, shirts, a bunch of socks, some pants, dresses, sweaters and swimsuits, shorts, and intimates.



Sekrup pemasangan



Pano.V

Towel rack



Material alumunium ruang:

Our towel holders are made of high-quality space 6063# aluminum that is strong and durable.

90° folding design:

The towel shelf and 1 towel bar can be folded 90 degrees. When you don't need to use it, you can fold it up, greatly saving space,

Black spraying technology:

Using ultra high-temperature matt black spraying technology, the black surface is smooth and beautiful, not easy to oxidation, fade, and paint off, delivers minimalist and ageless appeal well, and adds a modern touch to your bathroom.

Pilihan warna:

The towel storage is no assembly required, and two mounting options are available: No drill mounting-Adhesives Sealant, and drill mounting-screws.

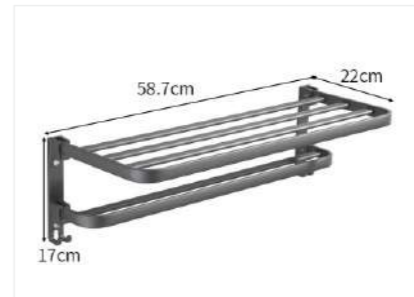
Pano.V

Towel rack



NO.6-1

Nama:Towel rack-60cm
Warna: Black
Material produk:Aluminum
Aksesoris produk: sekrup + lem



NO.6-18

Nama:Towel rack-60cm
Warna: Grey
Material produk:Aluminum
Aksesoris produk: sekrup + lem



NO.6-19

Nama:Towel rack-60cm
Warna: white
Material produk:Aluminum
Aksesoris produk: sekrup + lem



NO.6-22

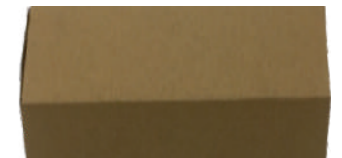
Nama:Towel rack-40cm
Warna: Black
Material produk:Aluminum
Aksesoris produk: sekrup + lem



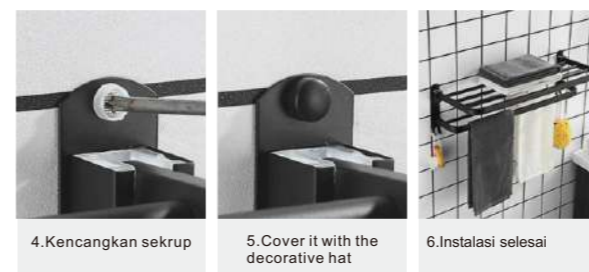
NO.6-23

Nama:Towel rack-50cm
Warna: Black
Material produk:Aluminum
Aksesoris produk: sekrup + lem

Packaging + Accessories



Sekrup pemasangan



Glue installation



Pano.V

Towel rack



Material alumunium ruang:

Our towel holders are made of high-quality space 6063# aluminum that is strong and durable.

STURDY & DURABLE:

With superior metal material and drilling installation, towel rack is designed to withstand daily use and remain sturdy, ensuring long-lasting performance without deformation. The thick premium finish makes it waterproof and rustproof. Moreover, its smooth touch prevents your towels from snags, tears, and scratches.

VERSATILE USE:

bathroom towel rack offers a reliable solution for your towel hanging needs. It can be used not only in the bathroom for towels, bathrobes, and even clothes but also in the kitchen for dishcloths or on the sink for hand towels.

Installation method:

and two mounting options are available: No drill mounting-Adhesives Sealant, and drill mounting-screws.

Pano.V

Towel rack



NO.6-2

Nama:Towel rack-60cm
Warna: Black
Material produk:Aluminum
Aksesoris produk: sekrup + lem



NO.6-20

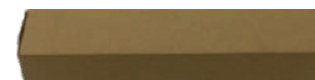
Nama:Towel rack-60cm
Warna: Grey
Material produk:Aluminum
Aksesoris produk: sekrup + lem



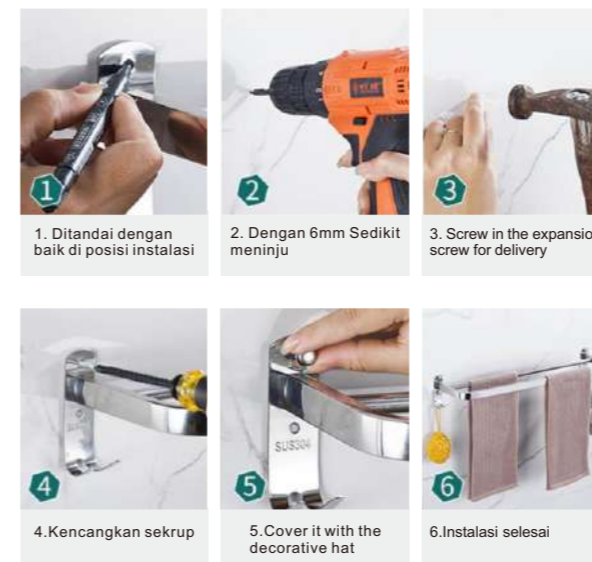
NO.6-21

Nama:Towel rack-60cm
Warna: white
Material produk:Aluminum
Aksesoris produk: sekrup + lem

Packaging + Accessories

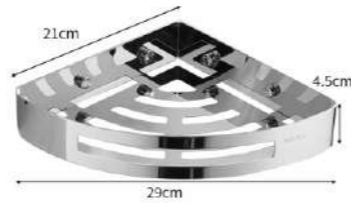


Sekrup pemasangan



Glue installation





NO.6-13

Nama: Storage rack
 Warna: plating
 Bahan produknya: 304 Stainless steel
 Aksesoris: Sekrup pemasangan

Packaging + Accessories



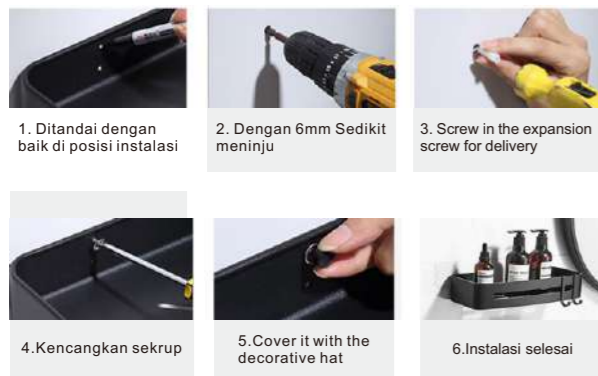
Bahan produk:

304 stainless steel material. Kuat dan tahan lama

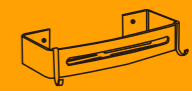
Mudah dipasang:

perangkat keras yang kita miliki. (pemasangan sekrup) pemasangan sekrup dan (jangan melubangi) lem agar produk tetap menarik secara estetika.

Sekrup pemasangan



Glue installation



NO.6-30

Nama: Storage rack
 Warna: plating
 Bahan produknya: 304 Stainless steel
 Aksesoris: Sekrup pemasangan

Packaging + Accessories



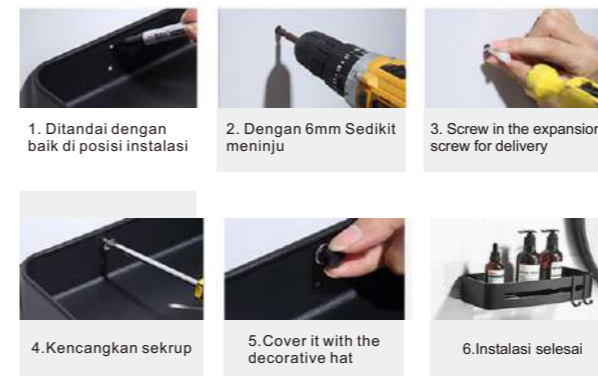
Bahan produk:

304 stainless steel material. Kuat dan tahan lama

Mudah dipasang:

perangkat keras yang kita miliki. (pemasangan sekrup) pemasangan sekrup dan (jangan melubangi) lem agar produk tetap menarik secara estetika.

Sekrup pemasangan



Glue installation





High-quality materials:

It is made of steel wire tubes and high-molecular PP raw materials, and is integrally formed with the drainage pipe. It is leak-proof, heat-resistant, frost-resistant, durable, not easy to crack, and has a long service life

Stretching Design:

Untuk segala Ukuran pembuangan 1 inch - 1/4 Inch. cocok pada wastafel berdiameter 35.5mm .diameter pembuangan pipa 29mm. It can be twisted and stretched at will to solve offset or other plumbing problems. It can also be twisted freely in a small space to save space.

Rubber plug Design :

It is easy to connect with the filter and has good sealing performance

Double Deodorization:

The deodorizing cup is injection molded from transparent ABS material, allowing you to clearly see the drainage of the deodorizing core. There are no foreign objects inside, making it easy to clean. When not in operation, the check valve always remains closed. Rubber gaskets form a good seal at the connection and help seal odors



NO.8-1
 Nama: sebuah selang elastis
 Warna: white/putih
 Bahan produksi :ABS /PVC
 Untuk segala Ukuran pembuangan 1 inch - 1/4 Inch
 cocok pada wastafel berdiameter 35.5mm
 diameter pembuangan pipa 29mm

NO.8-2
 Nama: sebuah selang elastis
 Warna: black/hitam
 Bahan produksi :ABS /PVC
 Untuk segala Ukuran pembuangan 1 inch - 1/4 Inch
 cocok pada wastafel berdiameter 35.5mm
 diameter pembuangan pipa 29mm

NO.8-3
 Nama: sebuah selang elastis
 Warna: Grey/abu-abu
 Bahan produksi :ABS /PVC
 Untuk segala Ukuran pembuangan 1 inch - 1/4 Inch
 cocok pada wastafel berdiameter 35.5mm
 diameter pembuangan pipa 29mm

Packaging + Accessories



Pemasangan produk





High-quality materials:

It is made of steel wire tubes and high-molecular PP raw materials, and is integrally formed with the drainage pipe. It is leak-proof, heat-resistant, frost-resistant, durable, not easy to crack, and has a long service life

Stretching Design:

Untuk segala Ukuran pembuangan 1 inch - 1/4 Inch. cocok pada wastafel berdiameter 35.5mm .diameter pembuangan pipa 29mm. It can be twisted and stretched at will to solve offset or other plumbing problems. It can also be twisted freely in a small space to save space.



NO.8-5

Nama: sebuah selang elastis
Warna: white/putih
Bahan produksi :ABS /PVC
Untuk segala Ukuran pembuangan 1 inch - 1/4 Inch
cocok pada wastafel berdiameter 35.5mm diameter pembuangan pipa 29mm



NO.8-6

Nama: sebuah selang elastis
Warna: Grey/abu-abu
Bahan produksi :ABS /PVC
Untuk segala Ukuran pembuangan 1 inch - 1/4 Inch
cocok pada wastafel berdiameter 35.5mm diameter pembuangan pipa 29mm



NO.8-7

Nama: de-penyelam
Warna: slice
Bahan produksi: stainless



Packaging + Accessories

